



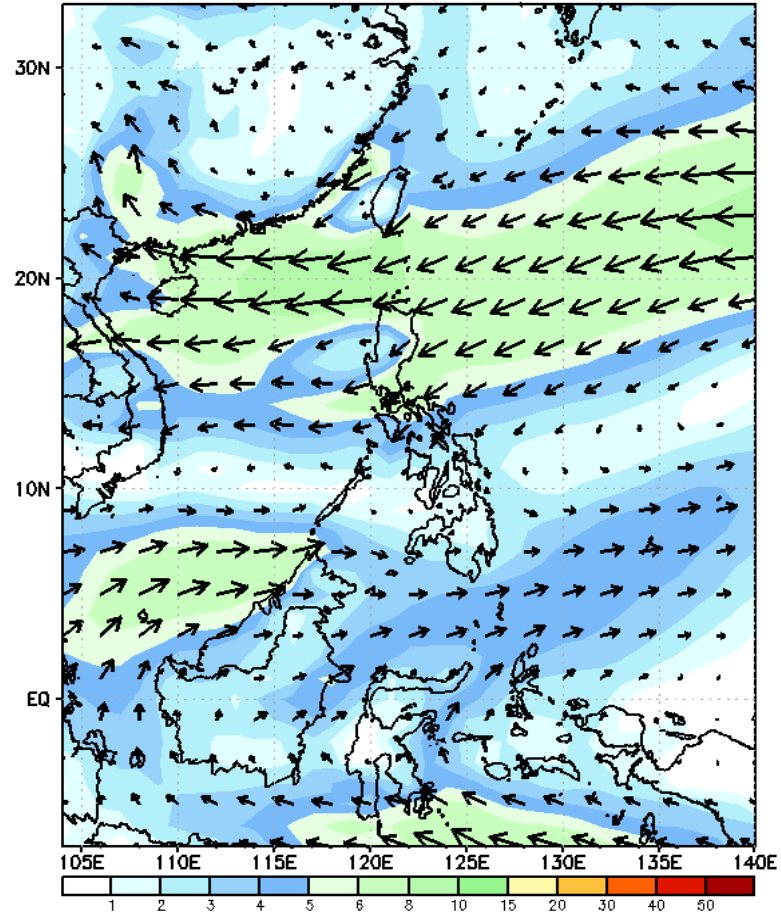
Week 1 & Week 2 Forecast for the Philippines using GEFS Model



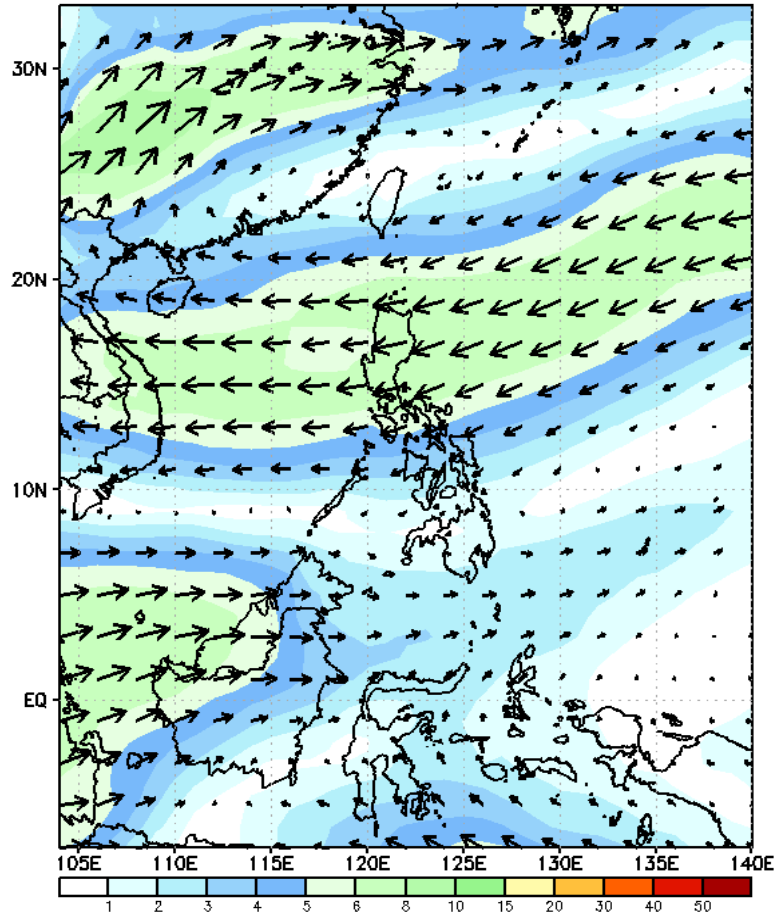
GEFS Week-1 Wind Forecasts:

Week 1: Oct 16-22, 2024

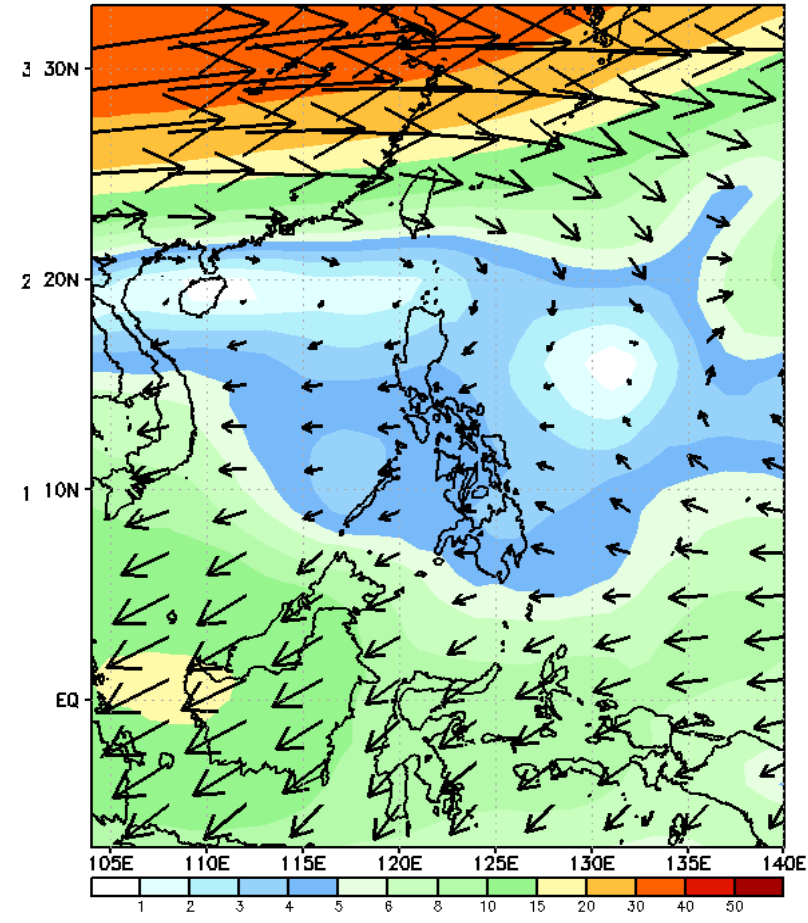
GEFS Week-1 850-hPa Wind Total
Valid: 20241016 - 20241022



GEFS Week-1 700-hPa Wind Total
Valid: 20241016 - 20241022

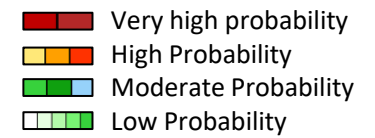


GEFS Week-1 200-hPa Wind Total
Valid: 20241016 - 20241022



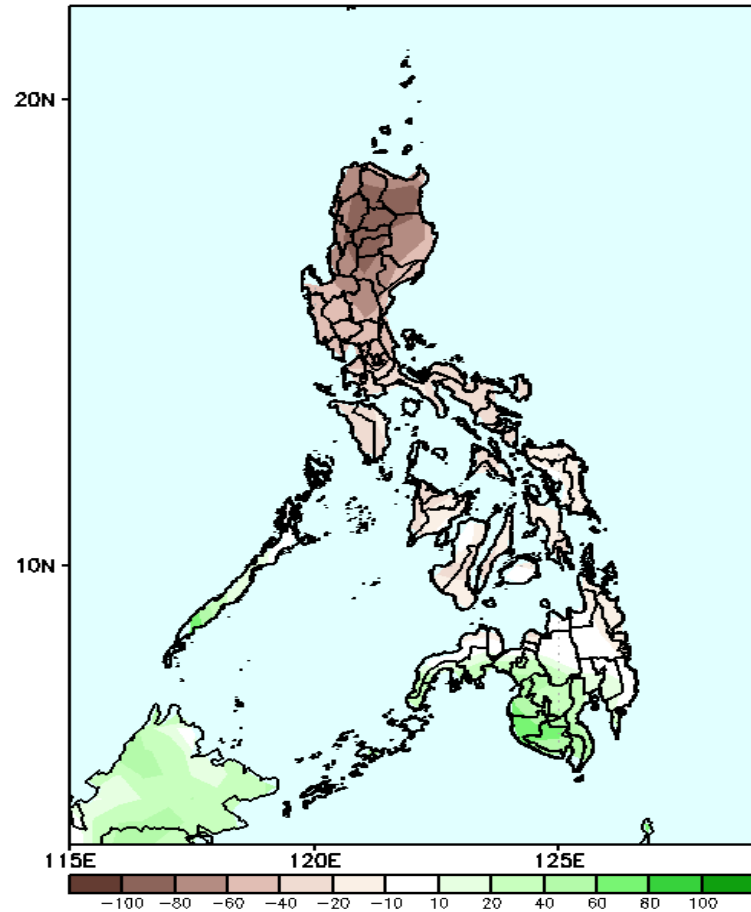
Easterlies affecting most parts of the country.

Precipitation Anomaly and Exceedance Probability > 25/50 mm



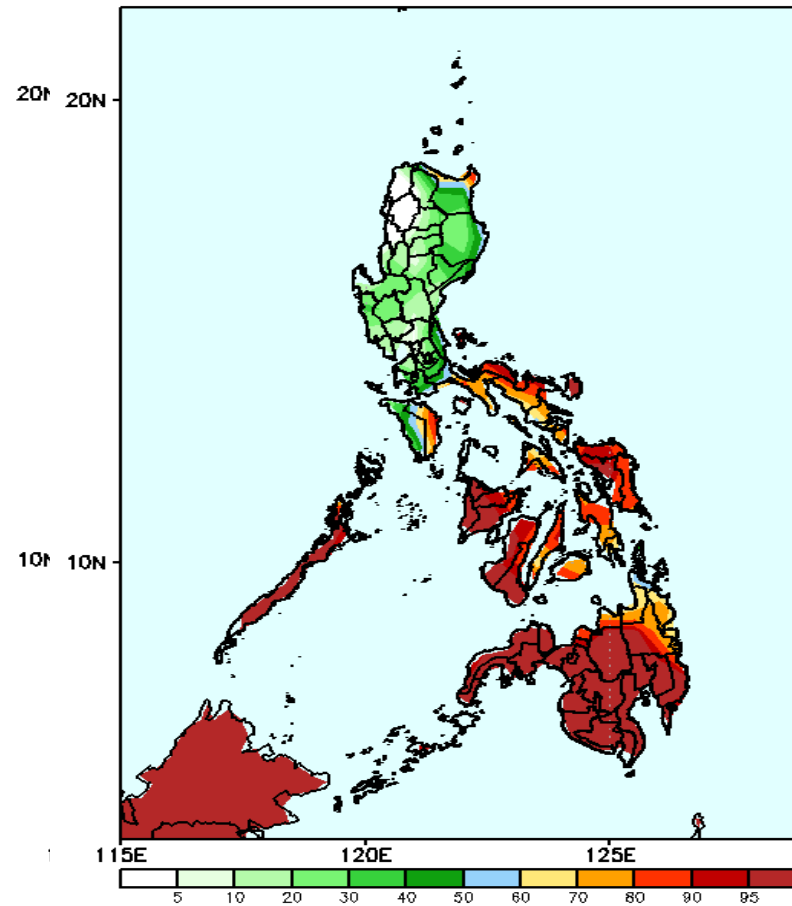
Week 1: Oct 16-22, 2024

GEFS Week-1 Precip Anomaly
Valid: 20241016 - 20241022



Rainfall deficit of 20-80mm is likely in most parts of Luzon and Visayas, while an increase of 20-50mm rainfall is expected in Palawan and Western and Central Mindanao.

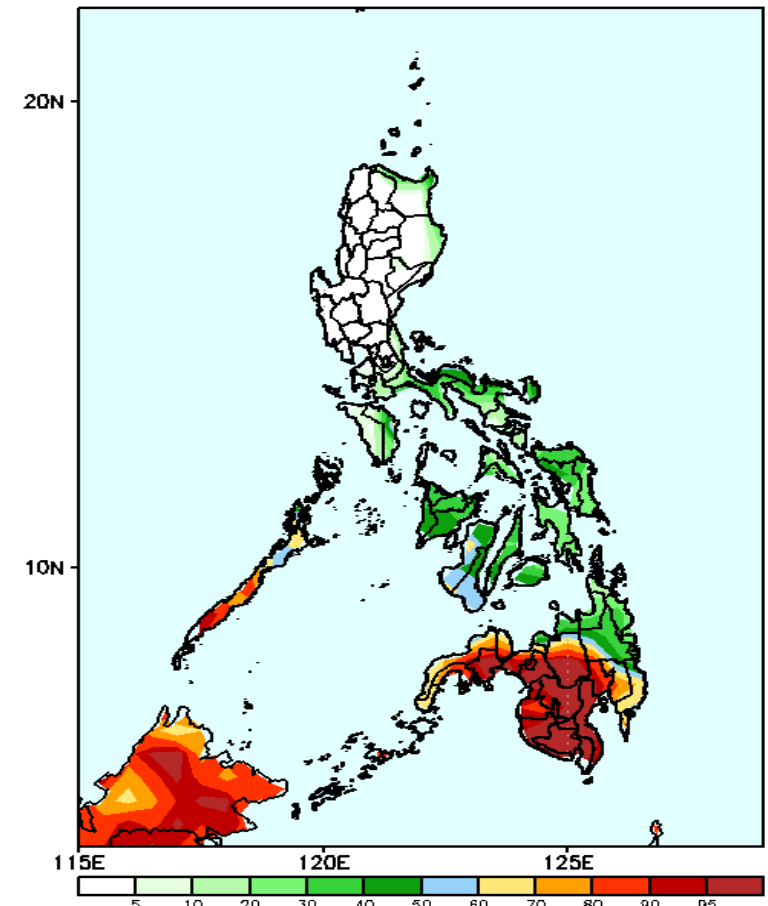
GEFS Week-1 Exceedance Prob. > 25mm
Valid: 20241016 - 20241022



Probability to Exceed 25mm

- High to very high over Bicol Region, Palawan, Visayas and most parts of Mindanao;
- Moderate to high over the northernmost part of Cagayan, the rest of MIMAROPA and Caraga;
- Low to moderate over the rest of the country.

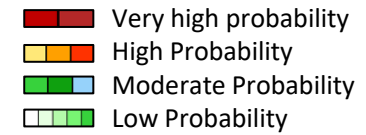
GEFS Week-1 Exceedance Prob. > 50mm
Valid: 20241016 - 20241022



Probability to Exceed 50mm

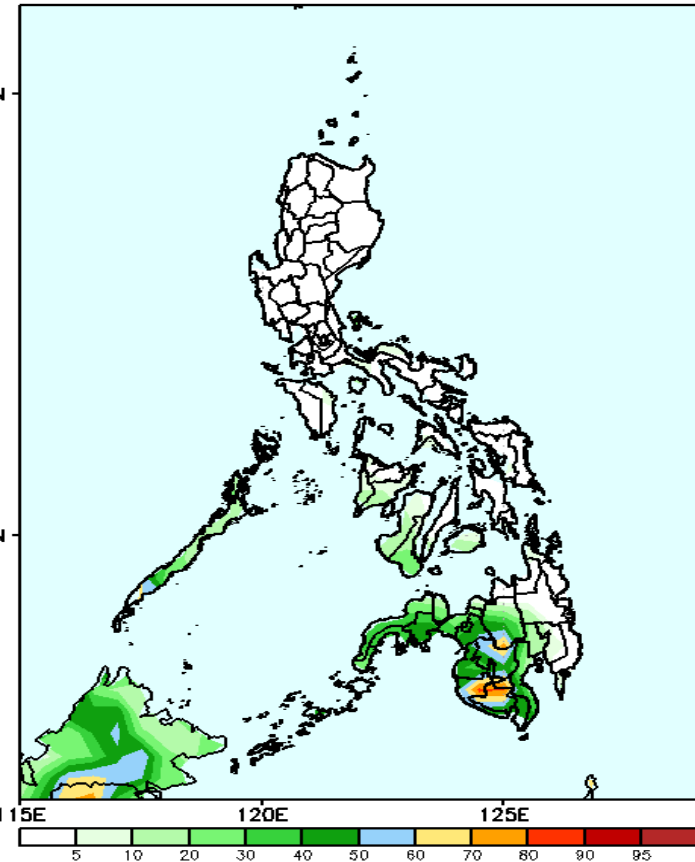
- High to very high over most of Mindanao;
- Moderate to high over Palawan, NIR, CARAGA and Misamis Oriental;
- Low to moderate over Southern Luzon and the rest of Visayas;
- Low over the rest of Luzon.

Exceedance Probability > 100/150/200 mm



Week 1: Oct 16-22, 2024

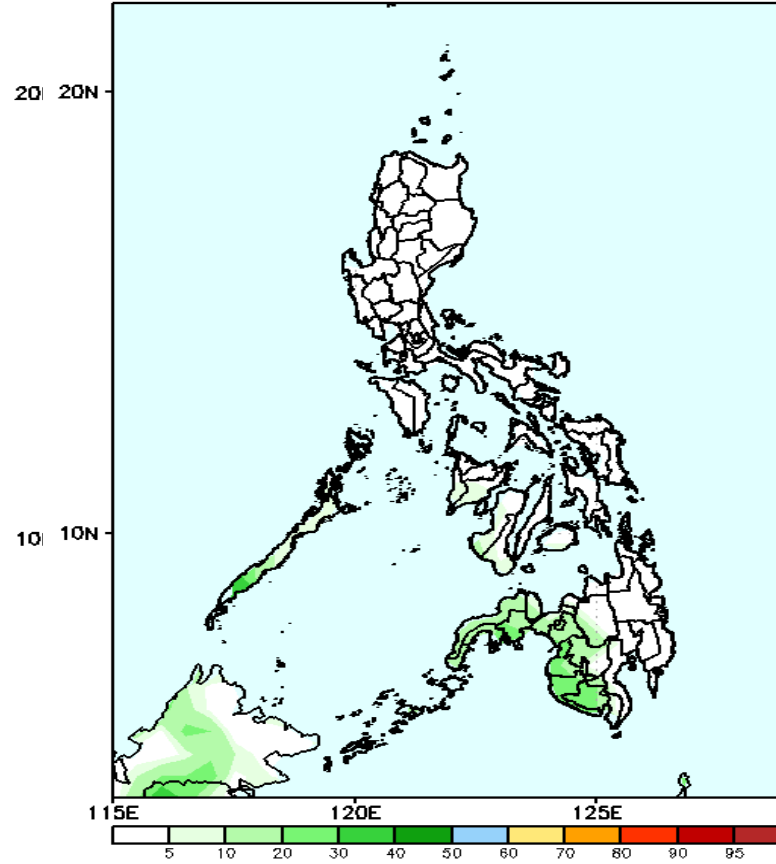
GEFS Week-1 Exceedance Prob. > 100mm
Valid: 20241016 - 20241022



Probability to Exceed 100mm

- Moderate to a high over the southern part of Palawan and Bukidnon and SOCCSKSRAGEN;
- Low to moderate over the rest of Western and Central Mindanao;
- Low over the rest of the country.

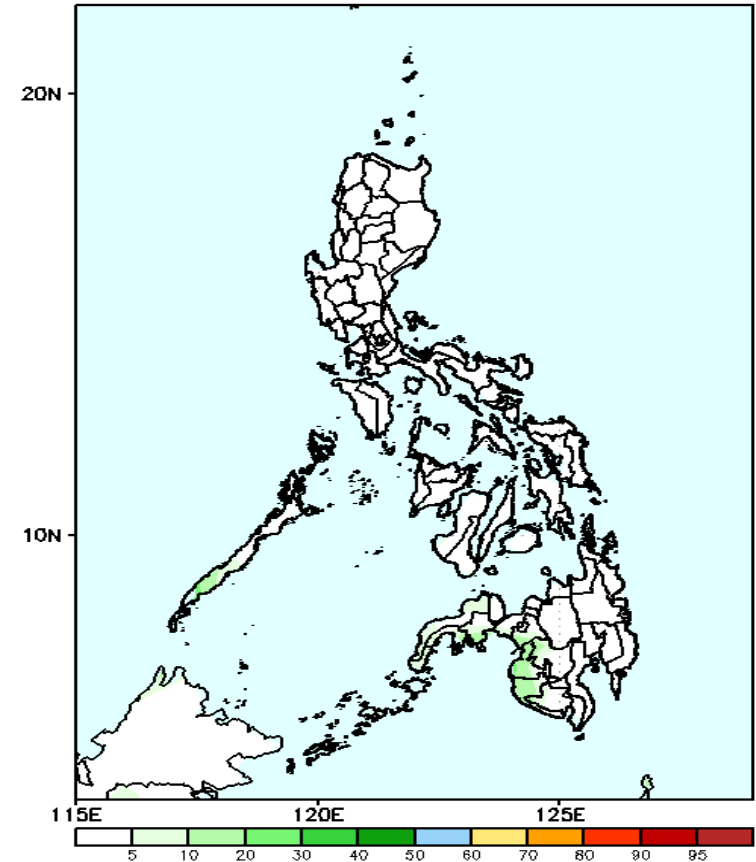
GEFS Week-1 Exceedance Prob. > 150mm
Valid: 20241016 - 20241022



Probability to Exceed 150mm

- Low across the country.

GEFS Week-1 Exceedance Prob. > 200mm
Valid: 20241016 - 20241022



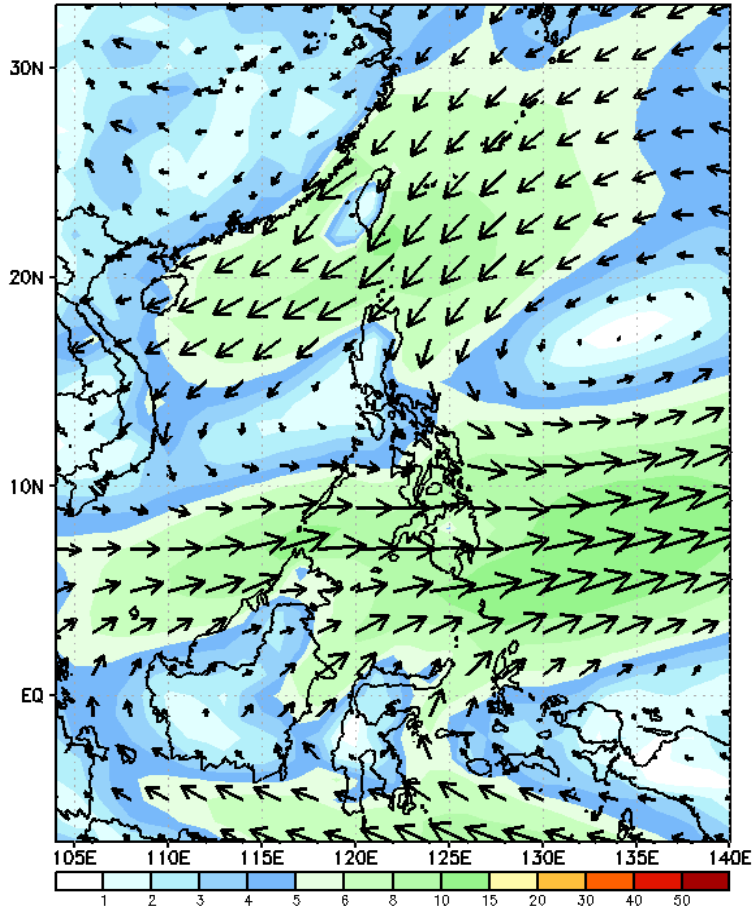
Probability to Exceed 200mm

- Low across the country.

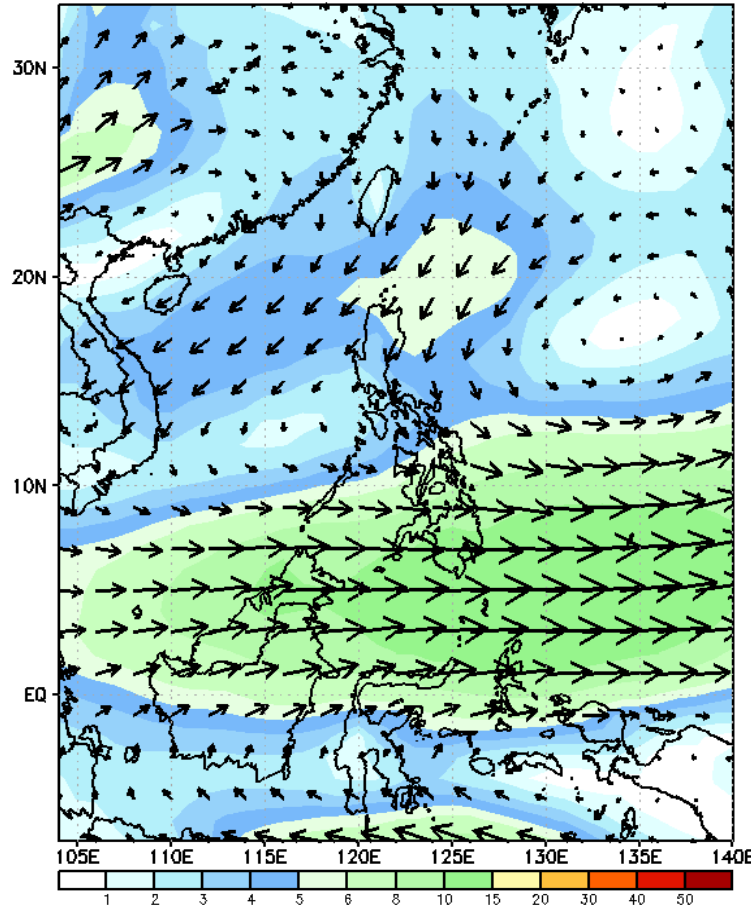
GEFS Week-2 Wind Forecasts:

Week 2: Oct 23-29, 2024

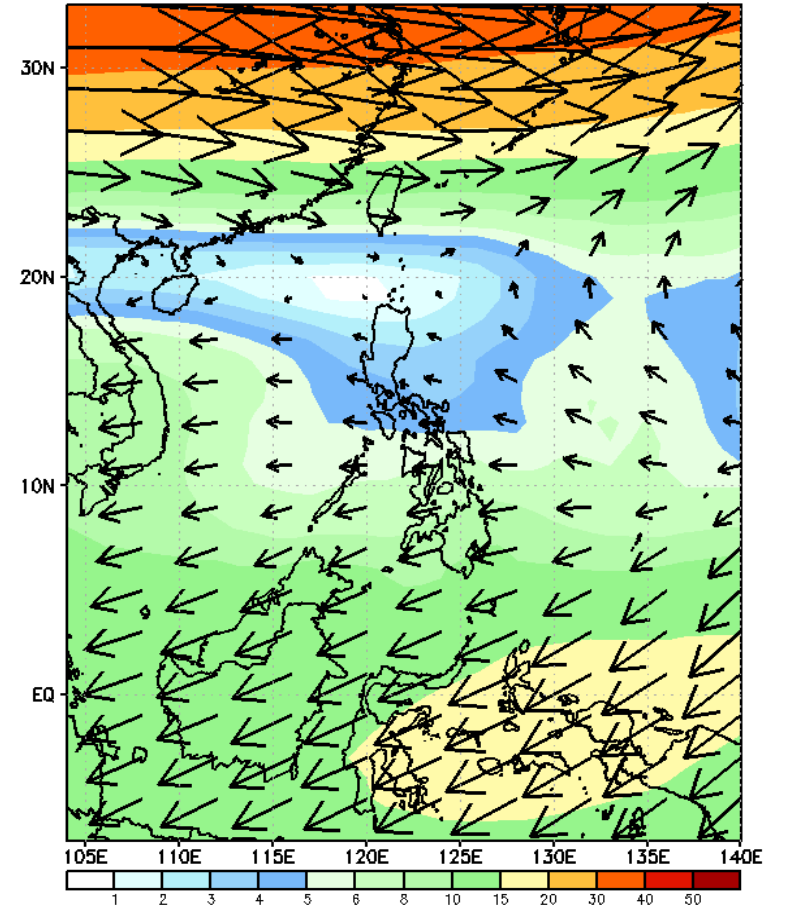
GEFS Week-2 850-hPa Wind Total
Valid: 20241023 - 20241029



GEFS Week-2 700-hPa Wind Total
Valid: 20241023 - 20241029

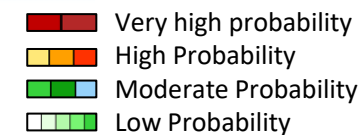


GEFS Week-2 200-hPa Wind Total
Valid: 20241023 - 20241029



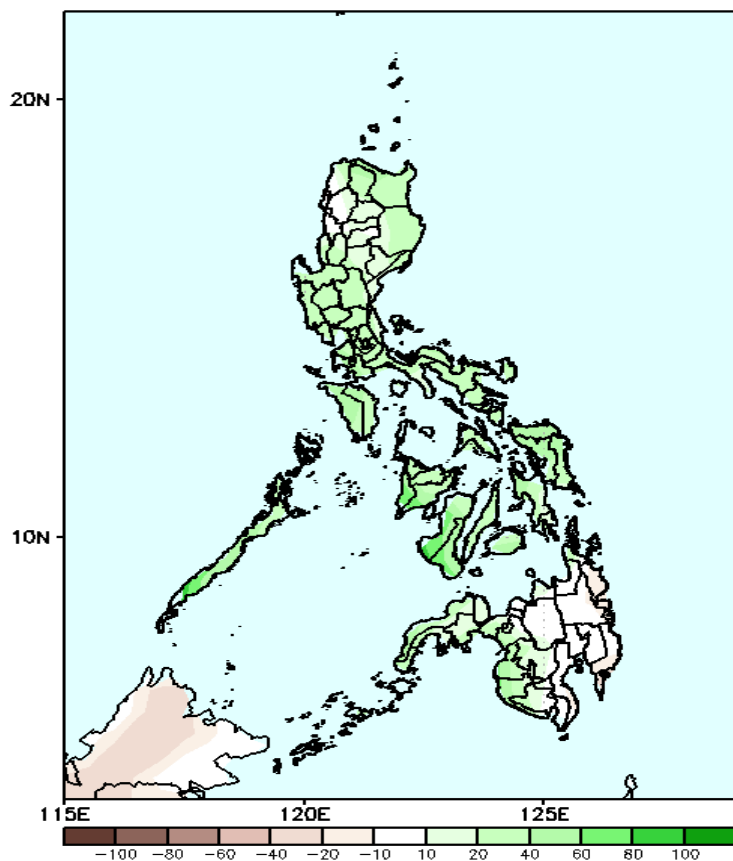
Northeasterly windflow is forecasted to affect Extreme Northern Luzon. Easterlies affecting the rest of the country.

Precipitation Anomaly and Exceedance Probability > 25/50 mm



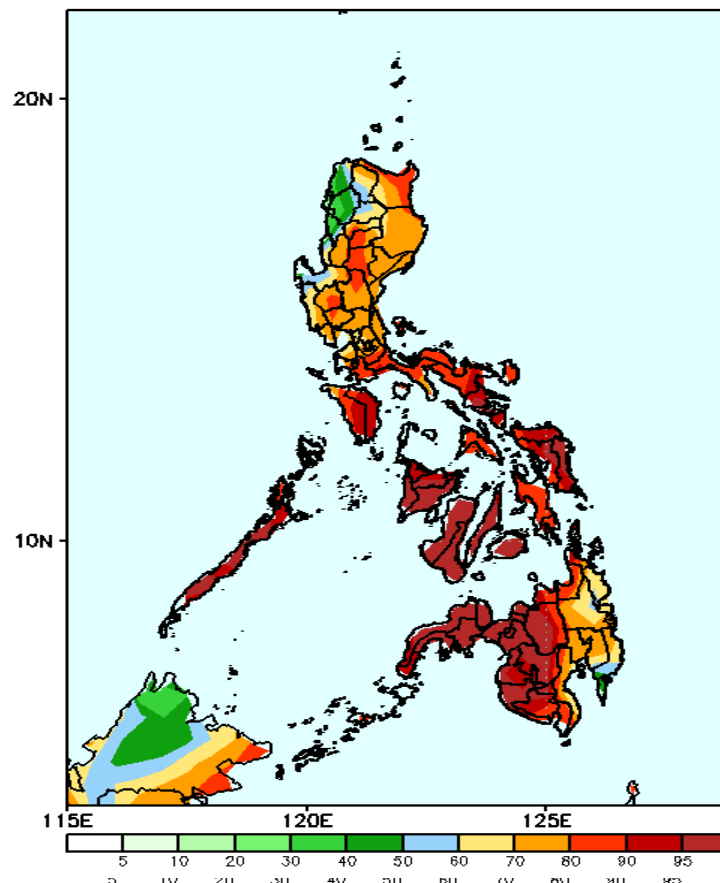
Week 2: Oct 23-29, 2024

GEFS Week-2 Precip Anomaly
Valid: 20241023 - 20241029



Increase of rainfall of 20-60mm is likely in most parts of the country

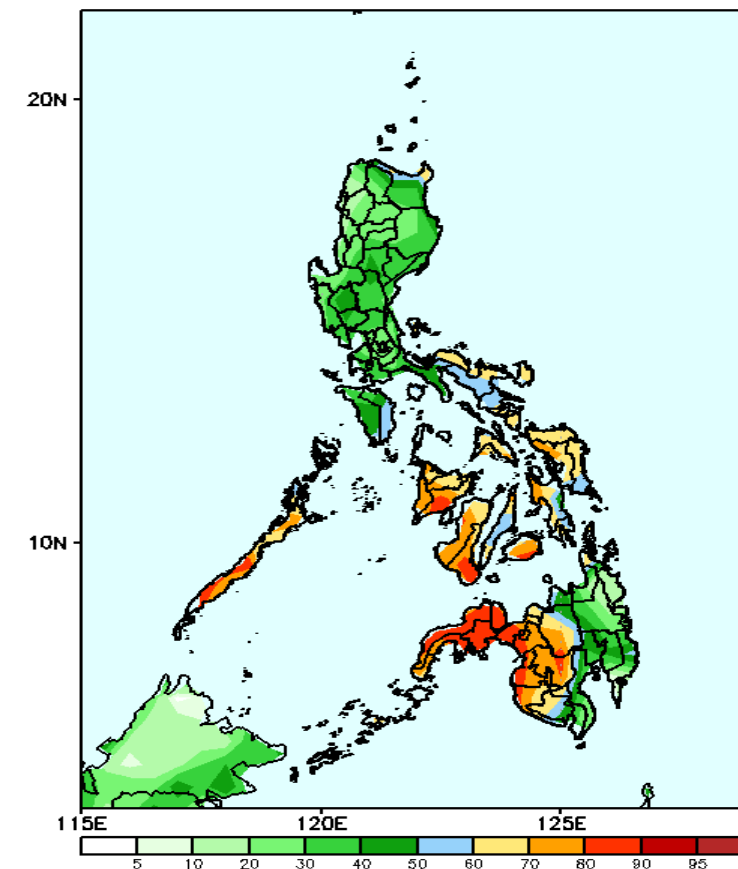
GEFS Week-2 Exceedance Prob. > 25mm
Valid: 20241023 - 20241029



Probability to Exceed 25mm

- High to very high over most parts of the country;
- Moderate to high over Ilocos Region, Apayao, Abra, Kalinga and Davao Oriental.

GEFS Week-2 Exceedance Prob. > 50mm
Valid: 20241023 - 20241029



Probability to Exceed 50mm

- Moderate to high over the northernmost part of Cagayan, Bicol Region, MIMAROPA, Visayas and Western and Central Mindanao;
- Low to moderate over the rest of the country.

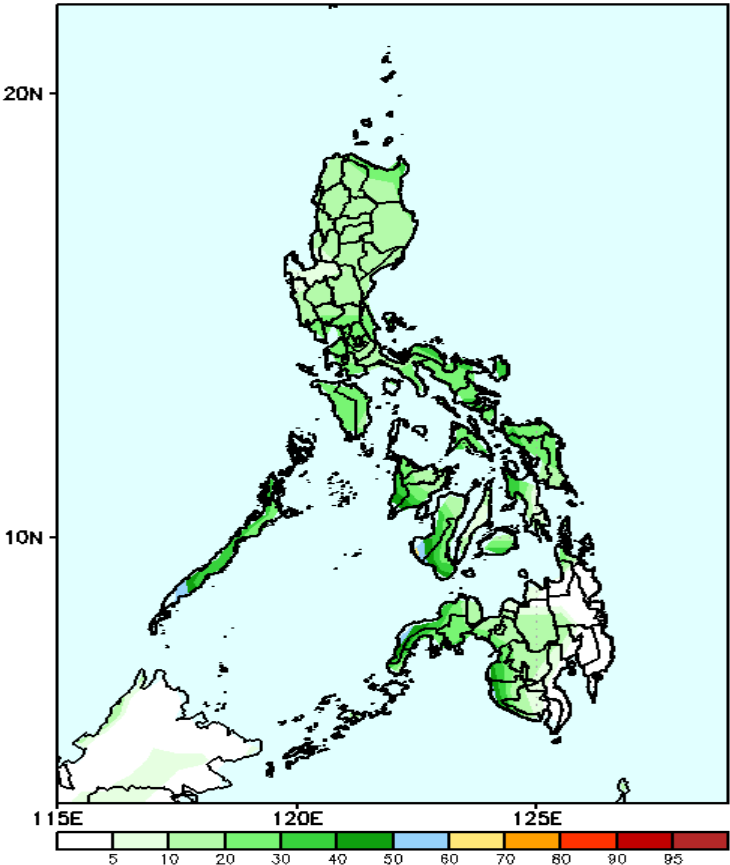


Exceedance Probability > 100/150/200 mm

- Very high probability
- High Probability
- Moderate Probability
- Low Probability

Week 2: Oct 23-29, 2024

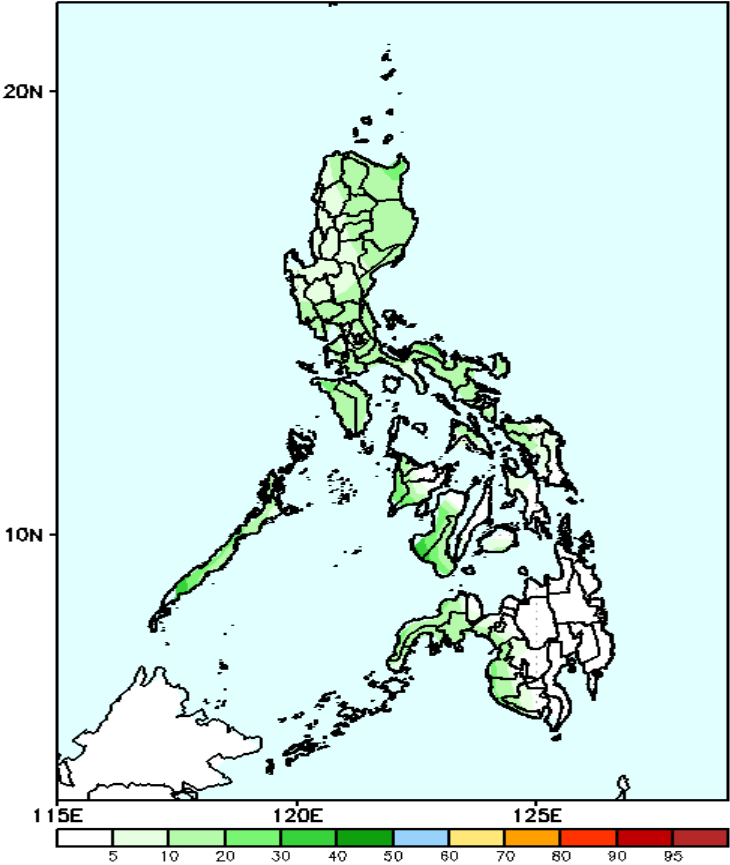
GEFS Week-2 Exceedance Prob. > 100mm
Valid: 20241023 - 20241029



Probability to Exceed 100mm

- Low to moderate over Palawan, Negros Occidental and Zamboanga del Norte;
- Low over the rest of the country.

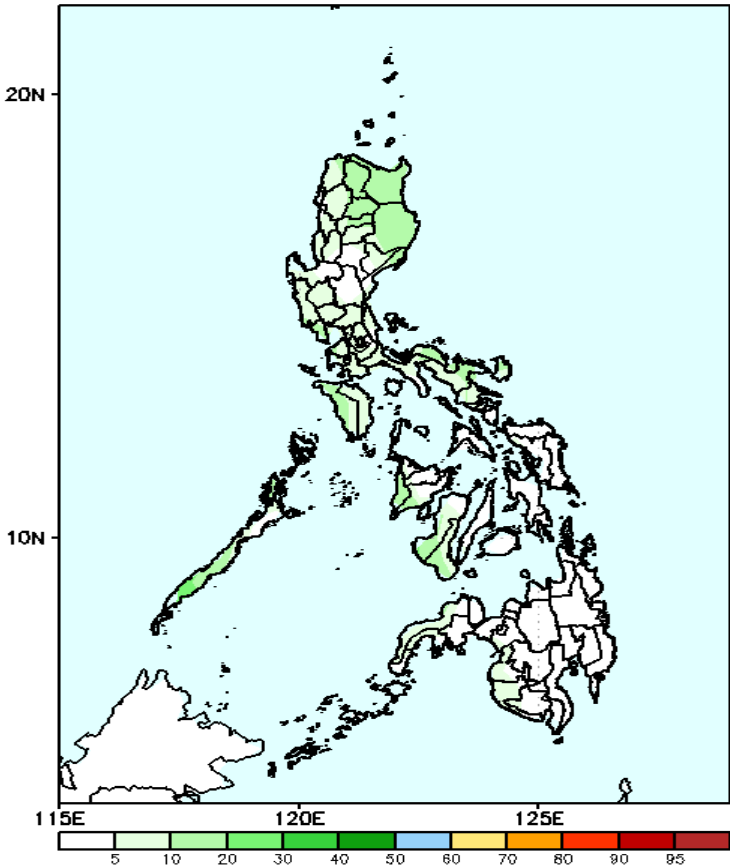
GEFS Week-2 Exceedance Prob. > 150mm
Valid: 20241023 - 20241029



Probability to Exceed 150mm

- Low across the country.

GEFS Week-2 Exceedance Prob. > 200mm
Valid: 20241023 - 20241029

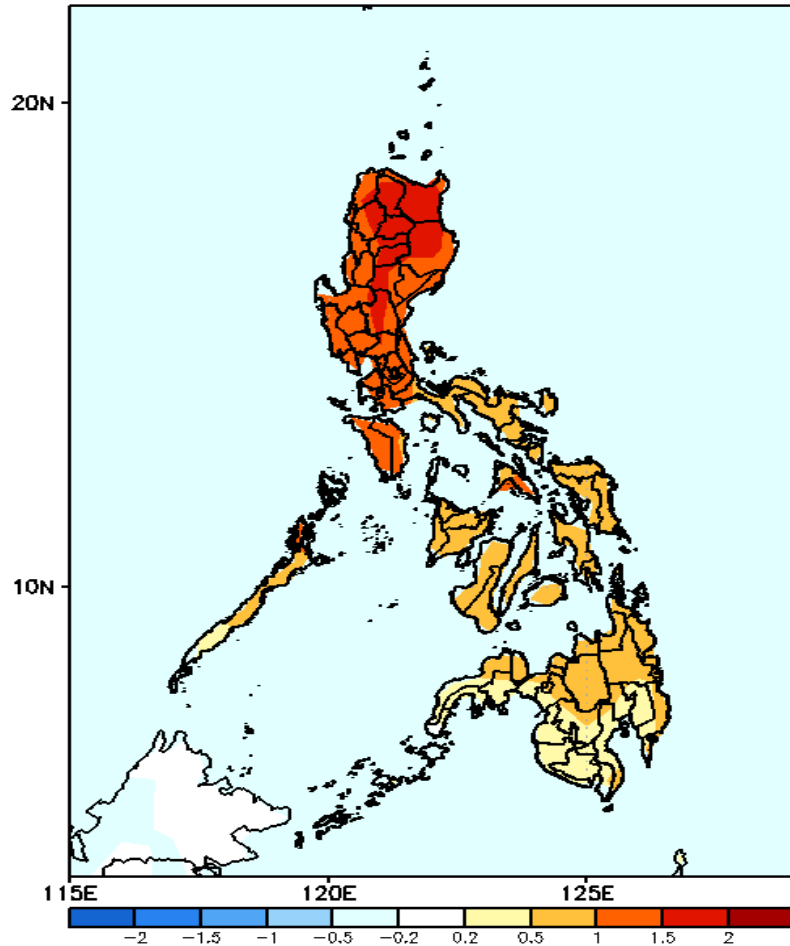


Probability to Exceed 200mm

- Low across the country.

GEFS Week-1 & 2 Forecasts: T2m Anomaly

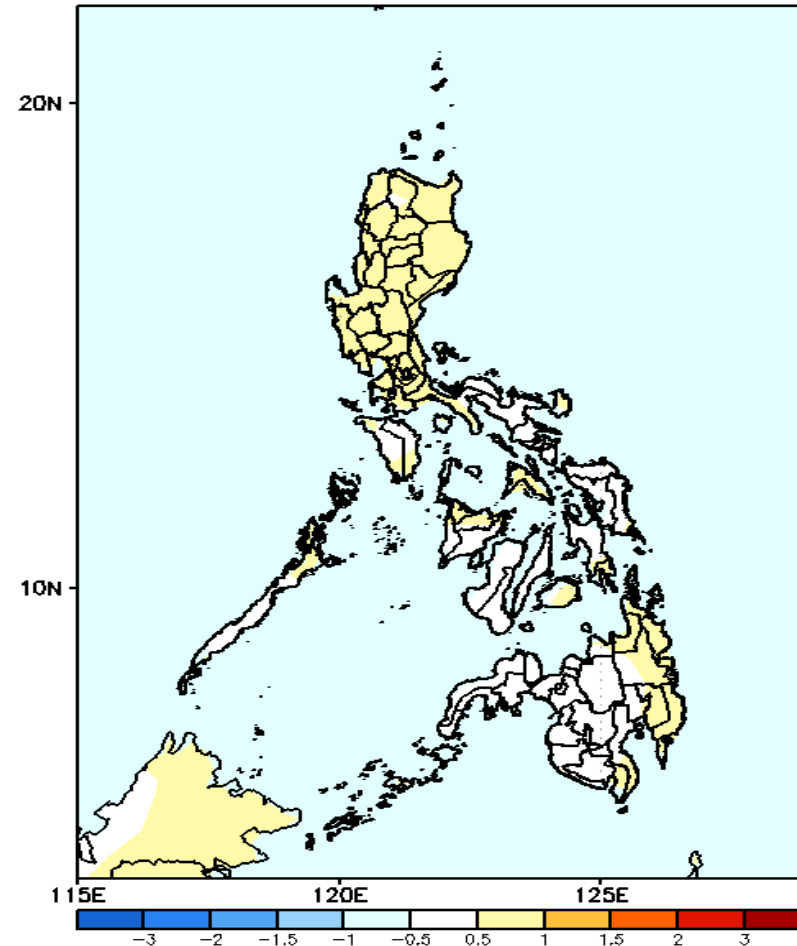
GEFS Week-1 T2m Anomaly
Valid: 20241016 - 20241022



2m Temperature Week 1: Oct 16-22, 2024

Slightly warmer to warmer than average surface air temperature will likely be experienced in most parts of the country.

GEFS Week-2 T2m Anomaly
Valid: 20241023 - 20241029



2m Temperature Week 2: Oct 23-29, 2024

Near to slightly warmer than average surface air temperature will likely be experienced in most parts of the country.

